

NMP-200U

Solid-state Network Digital Signage Media Player



The NMP-200U media player is an industrial-grade digital signage system with flexible network management and physical media content update features.

Network-Managed Digital Signage Solution

Equipped with the TCP/IP networking protocol stack, the NMP-200U is a powerful digital media system offering connected signage over standard data networks. The built-in LAN-mode API lets end-users control the media player using HTTP commands or via the bundled Manager Express software. For larger networks, the optional Central Management Service subscription connects multiple NMP-200U devices anywhere in the world over a common DSL IP network.

Highlights

- ♦ **Network-Managed Digital Signage Player**
- ♦ **Powerful schedule management features with included PC software**
- ♦ **Dedicated Non-PC Technology**
- ♦ **Plug-and-Play Ease of Use**

Suitable for

- ♦ **Retail Branding / Merchandising**
- ♦ **Advertising Networks**
- ♦ **Electronic Menu Boards**
- ♦ **Airports & Train Stations**
- ♦ **Gas Pump Advertising**
- ♦ **Compliance Training**

Dedicated Non-PC Technology

The NMP-200U features leading video decoding hardware technology capable of withstanding 24x7x365 operation cycle with almost no maintenance effort. Dedicated digital signage technology eliminates the risks of virus infection and operating system crash commonly found in PC-based solutions. Compared to a PC that typically consumes 100 watts, the NMP-200U's technology cuts power consumption by over 90%, lowering your operation cost while conserving the environment. Dedicated technology yields the lowest TCO (total cost of ownership) among the industry.

Plug-and-Play Ease of Use

The compact form factor allows the NMP-200U to be installed in the smallest spaces available. When network is unavailable, using the NMP-200U is as simple as loading media files to the specified folder on a USB drive and plugging the USB drive into the device to update the player's internal storage. After the update, media files are copied into the device for playback and the USB drive may then be removed. No extra handling is needed. This plug-and-play ease of use allows the untrained field-person to conveniently and reliably update digital signs at each location.

Technical Specification

POPPI Screen Media Standards Support

- S1 (JPEG 480p baseline)
- S4 (MPEG L2 audio)
- S5 (MP3 audio, 384Kbps)
- S6 (MPEG-1 SIF, 3Mbps CBR)
- S7 (MPEG-1 480p, 10Mbps CBR)
- S9 (MPEG-2 480p, 6Mbps CBR)
- E7 (MPEG-4 ASP, 480p, 10Mbps CBR)

Playback Control

- Alphabetical looping
- Playlist script control
- Central Management Service (Optional)

Content Management

- LAN – Manager Express
- Replace/edit CF card
- USB direct update
- WAN – Central Web Server (Optional By Service Subscription)

Physical Connectors

- VGA
- S-video, composite RCA
- 3.5mm audio jack
- 10/100 Base-T Ethernet
- USB x 1

Local Storage

- CF card required, sold separately (a 4GB card holds approx. 3 hours of 480p video)

Accessories

- RCA male-3.5mm female audio cable
- 3.5mm male-male audio cable
- Ethernet cable

Power

- Input: 5V @ 2A DC
- Consumption: typical 4W

Environmental

- Operating temperature: 0 to 40°C
- Humidity: 5 to 85% @ 40°C, non-condensing

Dimensions (WxDxH)

- 5.3" x 4.4" x 1.0" (134mm x 114mm x 25mm)

Weight

- Approx 1.8 lbs (0.8 kg)

Safety

- UL-approved AC adapter

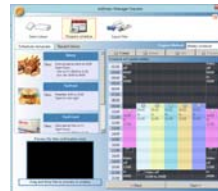
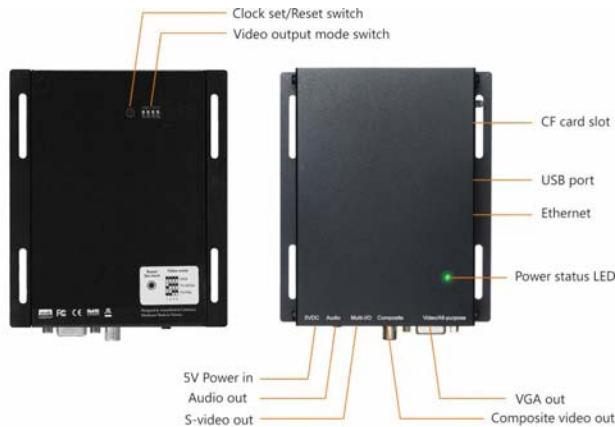
Certifications

- CE/FCC
- RoHS

Warranty

- 1-year limited parts & labor

Product Photos



△ **Manager Express for Playlist Scheduling**
Supporting Microsoft PowerPoint 2007 Slide Show

◁ **Player Connectivity**

Contact

Mary Meeker Design, Inc.

41911 Fifth Street, Suite 200

Temecula, CA 92590

Phone: (951) 571-3067

Email: mmeeker@marymeekerdesign.com